



John W. H. Bassett Theatre



A Hidden Gem in Toronto

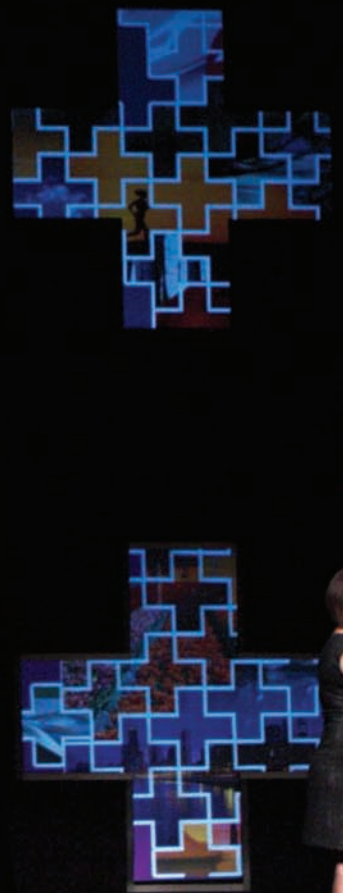
Whether the event you are planning is of a grand or intimate nature, the John W. H. Bassett Theatre offers a warm, yet striking setting that is sure to make a lasting impression on your guests.

Named after the Honorable John W. H. Bassett, a prominent Canadian figure whose philanthropic efforts included the arts, our state-of-the-art theatre is centrally located in the heart of downtown Toronto, within the walls of the Metro Toronto Convention Centre.

Sought out and utilized for a vast array of events, our theatrical setting is a blank slate that can be customized to your liking. Seminars, corporate functions, speaking engagements, cultural shows, and even high profile televised programs have all shone in the spotlight of the John W. H. Bassett Theatre, making our venue a highly versatile and desired space.

As with all functions hosted at the Metro Toronto Convention Centre, an event booked within our theatre will be coordinated by one of our dedicated in-house Event Managers. No detail is too small; their role is to work alongside you, ensuring your event is executed flawlessly, beautifully, and with ease.

ne



Hall of Fame





Designed with your needs in mind!

The John W. H. Bassett Theatre is a state-of-the-art theatrical facility featuring a large professional stage area and flexible lighting and sound options. Designed to accommodate even the most elaborate of stage productions, the theatre offers excellent acoustics and unobstructed sightlines from every plush, high-backed seat in the house.

We can provide you and your event with everything you'll need for an outstanding performance, including:

- An experienced Theatre Coordinator and crew to assist you with technical and labour requirements
- A spacious lobby area
- A full orchestra pit
- Adjacent rooms which are ideal for elegant pre and post performance dinners or receptions

Other facilities designed to make your event a success include full back-of-house amenities, such as a green room, a warm-up room, and seven change rooms. Of course, the theatre is fully wheelchair accessible too!







In a convenient, accessible location

Like the Metro Toronto Convention Centre itself, the John W. H. Bassett Theatre is conveniently located in the heart of downtown Toronto, easily accessible by local transit, major roads and expressways. Our facility has its own dedicated theatre entrance, and we offer 1,700 indoor parking spaces.



We are at the very centre of Toronto's vibrant entertainment district, and you'll find a wide variety of major attractions just outside our door. The city's finest hotels, restaurants and shops are within walking distance too – just steps away for you and your guests to enjoy after the show!

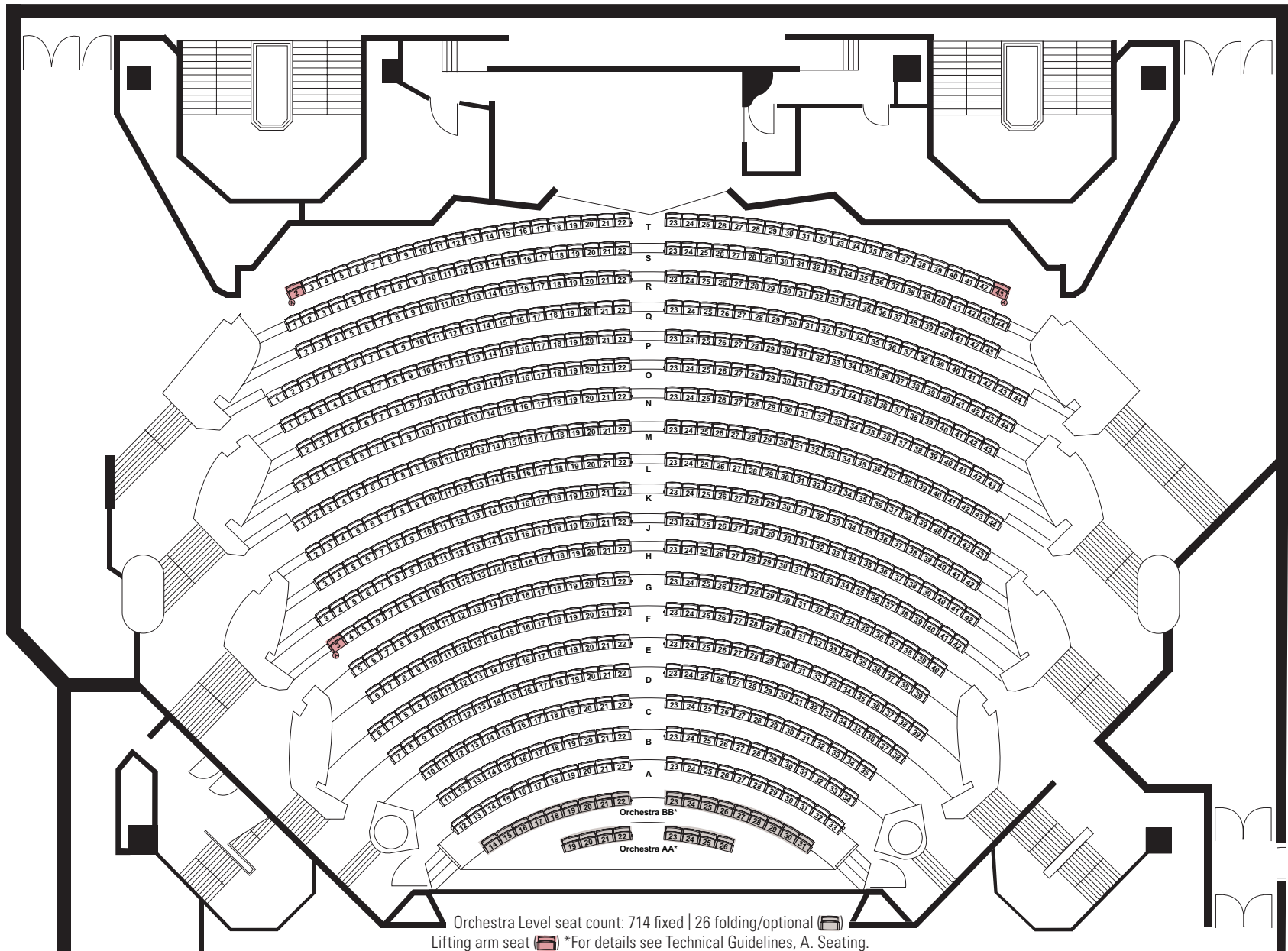
With versatility and flexibility as our goal

Our theatre has been designed as a multi-purpose, flexible facility. We offer comfortable seating for a variety of audience sizes – from small, intimate groups of 300 up to groups as large as 1,232 people.

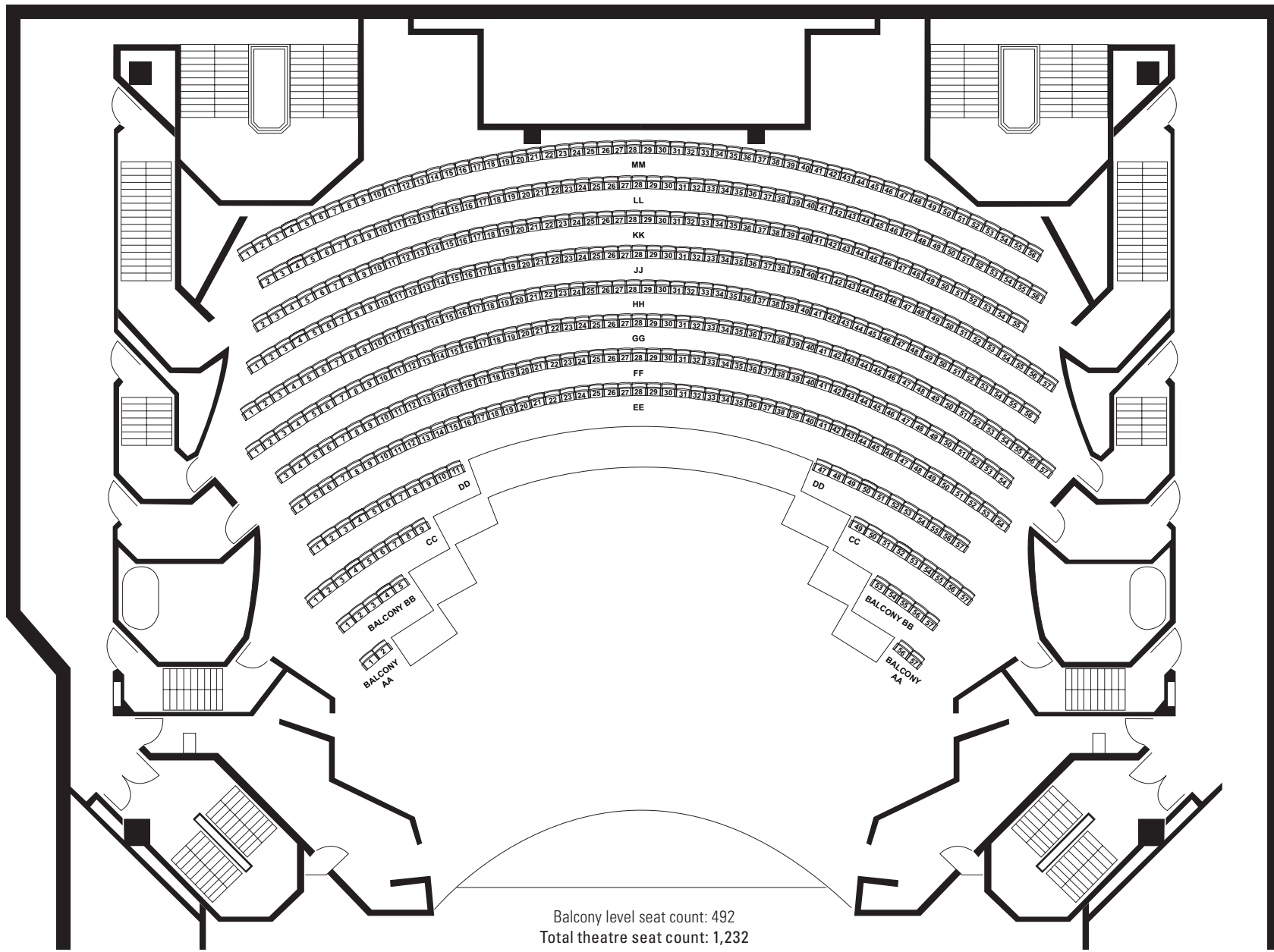


This versatility makes ours the venue of choice for a wide variety of events annually – concerts, theatrical productions, countless TV specials, corporate meetings and presentations, product launches and nationally televised award shows all prefer the John W. H. Bassett Theatre.

John W. H. Bassett Theatre | Orchestra

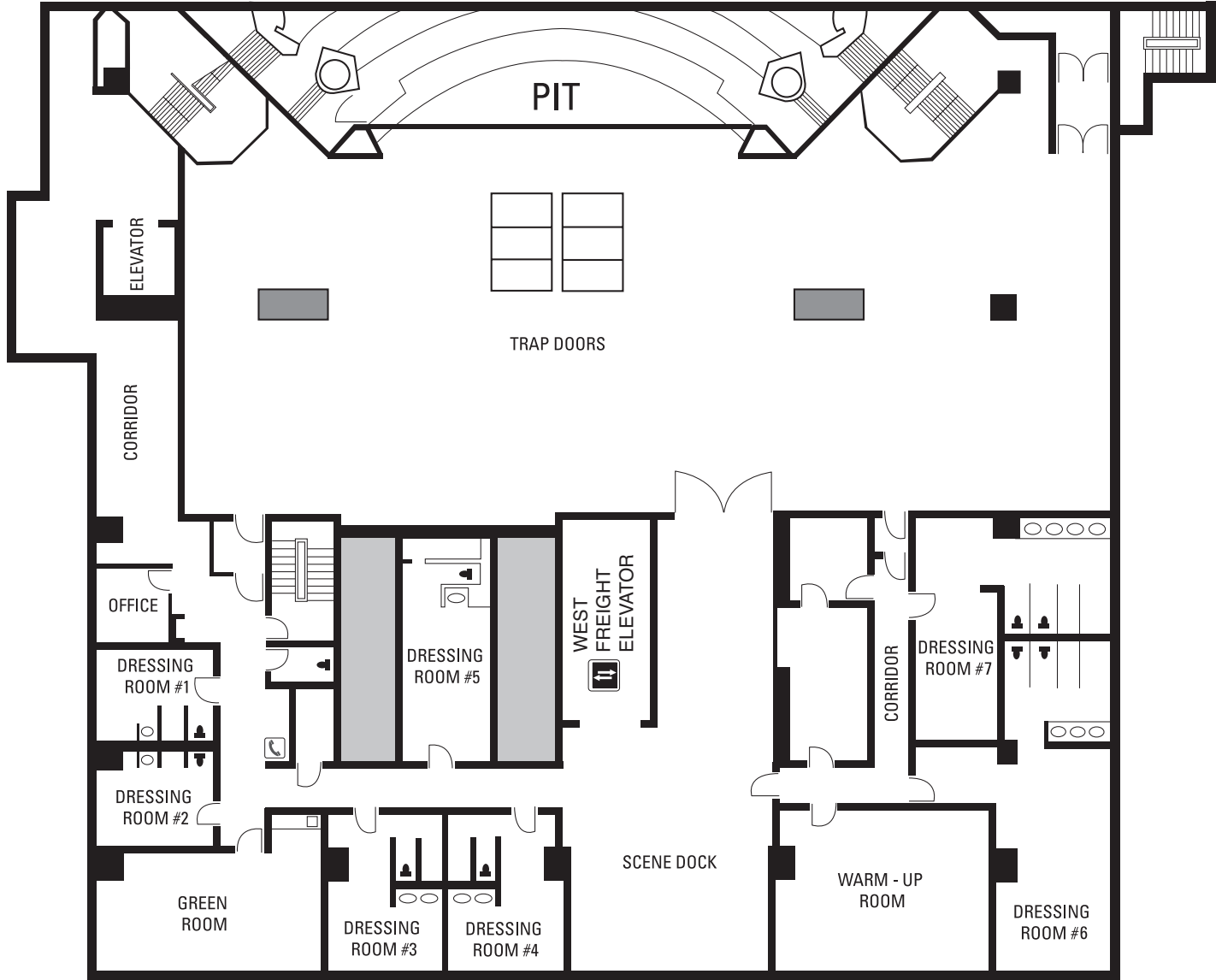


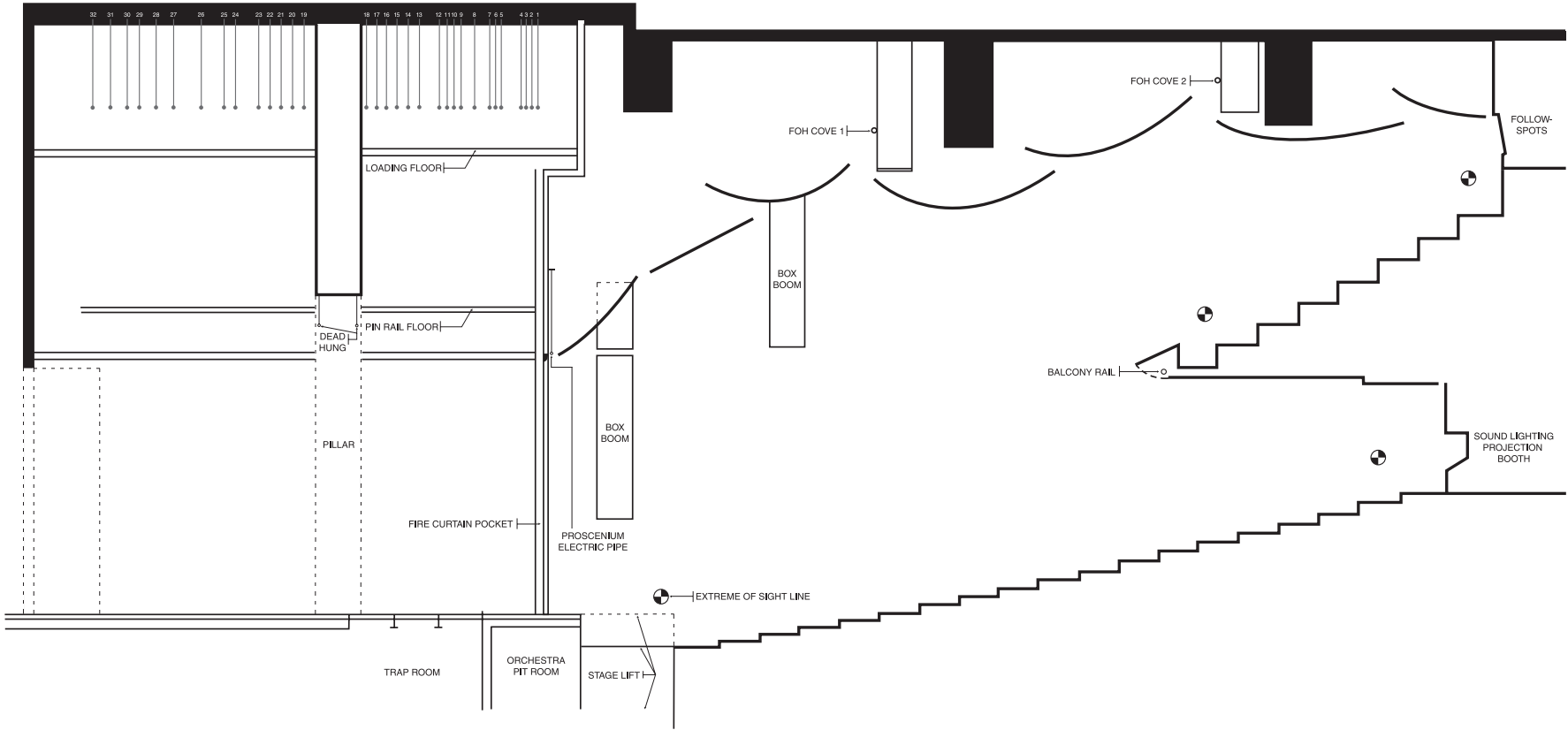
Orchestra Level seat count: 714 fixed | 26 folding/optional ()
Lifting arm seat () *For details see Technical Guidelines, A. Seating.
Total theatre seat count: 1,232



Balcony level seat count: 492
 Total theatre seat count: 1,232

John W. H. Bassett Theatre | Stage / Backstage









A. SEATING

1,232 seats individually numbered: 714
Orchestra Level, 26 folding / optional
(Orchestra AA & BB), 492 Balcony Level.

*Special notes

- Wheelchair seating is available on the Orchestra Level behind row T, with space on either side to accommodate up to 2 wheelchairs. Row T seat 2, Row T seat 43 and Row H seat 3 have an outer armrest that lifts up to allow wheelchair attendees to transfer from their wheelchair into the seat.
- Rows Orchestra AA and Orchestra BB are not available when the orchestra pit is in use.

B. STAGE DIMENSIONS

Proscenium Opening
Width: Max 45'10" Height: Max 22'
Depth back wall to front of stage: 48'
(Downstage apron to upper stage)

C. STAGE FLOOR

Maximum load limit 100 lbs / sq ft
Traps 6 @ 3'11" x 8'
Trap height: 9'
(No elevating device; must replace covers when using)

D. ORCHESTRA PIT

Pit width: 16'
Pit lift width: 8'
Pit length: 45' approximately
Pit Lift length: 40'
Max Pit lift load limits: 50 lbs / sq ft
Depth below stage: 9'
Depth below auditorium: 5'10"

E. FLY INFORMATION

Total line sets:

- 32 with counterweights
- Load capacity: 1,300 lbs evenly distributed
- Operation manual counterweight
- Length of pipe – 58' (with 3' extensions each end) Maximum flying height: 44'

Note: Exact line of drapery may vary

F. SCREEN

No permanent screen – screens can be rented from the audio visual provider.

G. BACK STAGE ROOMS

Stage Level

- 7 permanent dressing rooms with built-in washrooms, showers, make-up mirrors and coat racks (2-2 persons, 3-5 persons, 1-11 persons, and 1-15 persons)
- 1 warm-up room with mirrored wall and dance bar

- 1 green room – stage level
- 1 orchestra room under stage left
- 1 trap storage area

H. STAGE DRAPES

1 main curtain

Legs: 3 Pairs – 14’W x 22’6”H, black velour

Borders: 3-58’W x 12’H, black velour

Travellers: 2-64’W x 22.6’H, black velour

Muslin Cyclorama: 1-50’W x 22’6”H

I. SOUND REINFORCEMENT SYSTEM

An in-house sound system, suitable for speaking engagements only, is included in the rental of the theatre. An in-house operator is required at an additional charge at all times when this system is in use.

A mixer is available for use with the system at an additional charge. The sound may be mixed from the sound control room, located at the rear of the orchestra level, from the mid-house position or from the stage.

The system has been designed to provide a basic sound enhancement for a speaker only. For all other uses, a sound system must be rented and technical staff hired through the theatre.

J. PROJECTION

The official contractor has state-of-the-art projection equipment available to rent.

In-house projection capabilities include all formats of data, video / video mapping.

K. SIMULTANEOUS INTERPRETATION / IMPAIRED HEARING AID SYSTEM

Simultaneous interpretation and impaired hearing systems can be set up. Please contact the in-house official contractor for further information.

L. INTERCOM SYSTEM

Master stations – stage left

Stations – at all key production areas

Type – Clearcom (sections J, K, L, M available from in-house AV contractor)

M. POWER

All power connections throughout the theatre are available from the in-house electrical contractor.

Additional power for large production needs is available at stage level.

N. LIGHTING

Basic working lights are provided back stage with control on stage left and a 12kW, non-moveable stage wash is included. Stage lights, including spotlights, can be provided by the in-house staging contractor at an additional charge.

There is no provision for air handling equipment necessary for carbon-arc equipment.

O. LOADING FACILITIES

Access to the theatre backstage is through the West freight elevator. The loading dock will accommodate one 5 ton straight truck at a time for direct access to freight elevator. Loading dock is three floors above stage level. There is no dock lift available at this dock. Larger trucks to be off loaded will require alternate arrangements and must be approved by the Event Manager.

Freight elevator: 8’6” H x 8’6” W x 23’6” L

Maximum weight: 10,000 lbs

P. MISCELLANEOUS

Related equipment (i.e. music stands, stools, piano, musical instruments, etc.) can be arranged through the in-house contractors.



